



# Shaping the effortless laundry

Line 6000 Washers and Dryers

Washers and Dryers



# You talk...

Help me run a first-rate laundry where I get the absolute best results while reducing effort and costs. I need my team to get more done faster, thanks to an ergonomic design that reduces physical strain and a clear, attractive interface. Give me robust equipment that will save me money thanks to lower life cycle costs, year after year.



# ...we listen

**Line 6000 will save you money, anticipate your needs, and exceed your expectations.** Our intensive research and cutting-edge product development have led to an ergonomic line of washers and dryers that ensures effortless operation and exceptional savings. We connect you to the cloud to give you remote control over your operations, at all time. Come with us and discover how great your business can be.



## Innovation is the driver of great performance



### Easier, healthier, safer

Certified ergonomic design with a human-centered approach for an outstanding user experience.



### Real-time solutions

Monitor your equipment's status and performance from anywhere and take action to improve your business.



### Long-term savings

Innovative features to save money and time, and embrace a sustainable lifestyle.



### Outstanding productivity

Wash and dry more laundry in less time.



Easier,  
healthier,  
safer

Our priority is to create solutions designed precisely for the people who use them, day after day. **Exceptional results for minimal effort:** it's as simple as that.

# Our design is all about you

Anyone who does laundry day in and day out knows that repetitive acts like reaching, bending and pouring can be stress points that make the job more difficult and reduce productivity. By focusing on the physical and cognitive interaction between user and equipment, **we make each of these motions more comfortable for an all-around effortless experience.**

## Certified comfort

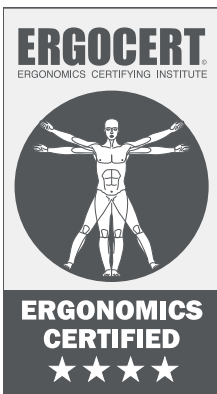
The user interface has passed third party external testing and the new range is **certified to international standards of ergonomics** and human-centered design.

Our washers and dryers have earned **the prestigious 4-star rating for ergonomics.** This means they have been user-tested to make sure your operators will feel less tension and strain, so they—and your business—can thrive.

## Pioneers in usability

Ergonomic interventions can reduce work-related musculoskeletal disorders (WMSDs) by **59%**, with an average decrease of **75%** in sick days and a **25%** increase in productivity.

Washington State  
Department of Labor & Industries



## Experience 4-stars



**Compliance with ergonomic principles**  
Designed with you in mind

**Evidence-based anthropometric & biomechanical compliance**  
Reduced risk of injury

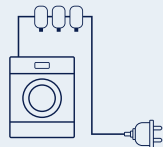
**Evidence-based usability**  
The culmination of years of professional studies and expertise

**Human-centered design**  
To make laundry simple and stress-free

# Automatic or manual dosing. Either way, you win



## Save time and chemicals with automatic dosing



### Quick to install with all functionality embedded

Simply connect the washer to one or more pumps (for up to 15 types of chemicals) with a single cable. Detergent, softener and other chemicals will be automatically dosed according to the program and weight of the load. Simplicity is at your service.

## Manual dosing has never been so simple



### The right height

The front-mounted dispenser is positioned for easy access and tilts down when opened so **you can see each compartment clearly**.



### Works with all types of chemicals

Suitable for **either powder or liquid detergent**, with a dedicated bleach compartment.



### Easy to clean

**Clear visibility** and removable components make cleaning the dispenser simple and convenient.



### User-friendly detergent dispenser

The dispenser has 6 color-coded compartments that **show you what to pour where**. Still not sure? Just follow the simple instructions on screen.



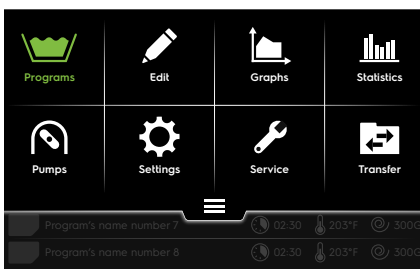
Watch the video and find out more!



# Making every step intuitive and straightforward

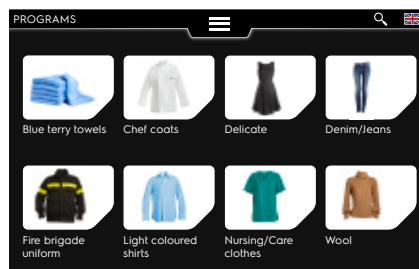


The new **ClarusVibe** control guarantees an intuitive experience and smooth interaction, providing a **smart and effortless way to manage the wash process**. Fully self-explanatory, it **saves time and boosts productivity** by making it easy to do the right thing on the first try for all users. ClarusVibe comes pre-set with all the programs you need, according to local regulations and the specifics of your business.



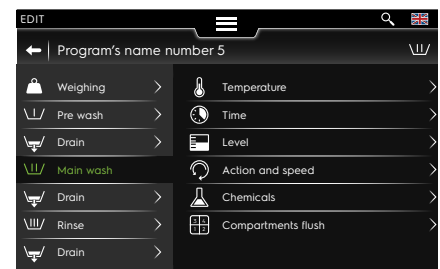
## Full HD 7" color touchscreen

A clear and comprehensive layout gives users **full command of the process** without the need for searching and scrolling.



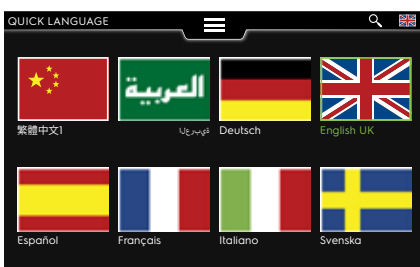
## Intuitive & customizable

More productivity with an easy-to-use interface. You can even **set a customizable picture** for each of your selected programs.



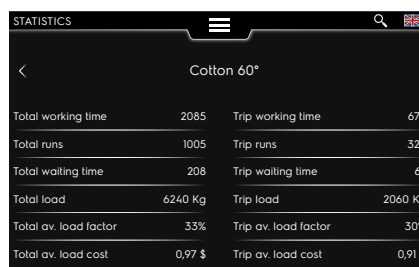
## Fully editable programs

Easily set up **programs for anything**, from delicates to workwear and from surgical scrubs to plastic toys. You can update your library any time, directly on screen, without the need for a computer.



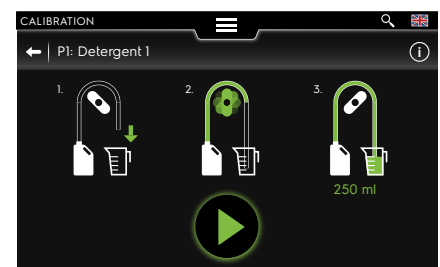
## Multi-language

**Compatible with all languages**, even right-to-left scripts like Arabic. For international use or your multicultural team.



## On-screen statistics

Easy, real-time access to a **wealth of information** that owners need to operate a successful business.



## Easy dosing

Dosing pumps are fully controlled by ClarusVibe so you can be sure the **right amount of each chemical** is added at the right step of the process.

# Work comfortably, dry more in less space



## The door that makes the difference:



### A better grip

Open and shut the door smoothly thanks to the handle design and easy-close magnetic door.



### Safer for users

The insulated glass door stays cool on the outside so there is **no risk of burned fingers or hands**. It also keeps the heat inside, so the room temperature is not affected.



### Ideal height

The door is positioned at the most ergonomically **suitable height**. This makes a real difference for loading and unloading.



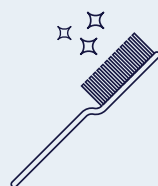
### Sturdy and reliable

Because the door is **built to last**, it will optimize performance throughout the life of the dryer.



### Space-saving

The new range **takes less than one square meter** of floor space, regardless of heating system (gas, electric, steam or heat pump).



## A filter drawer right where you need it

### Maximum comfort

The horizontal filter drawer is positioned for **easy access and cleaning** without the need to bend down. Human-centered design down to the smallest details **takes the stress out of a physically demanding job**.



Watch  
the video  
and find out  
more!





# The Power of the Tower

Wash & dry **60** kg per day in less than 0.4 m<sup>2</sup>!

If you put a premium on space, we have the solution for you. On their own, the WH6-6 Washer and the TD6-7 Dryer are both **full-featured professional models** in a compact size. As a pair, the efficiencies multiply for unbeatable productivity and savings.

With their smaller footprint, **they fit into challenging spaces or leave you room to install more equipment**, while still providing optimal results.

## Stackable!

They can be stacked to save space. In this case, the control panel on the dryer is moved to the bottom so it stays within easy reach.

## Smart interface



The Compass Pro<sup>®</sup> microprocessor works through a large screen where you can select your program easily in your choice of language. Quick-select buttons for frequently used programs and intuitive new icons for normal/low temperature, delicates, and other options.



Low Temp Sensitive



Normal Temp Extra Dry



Wool



Low Temp Down





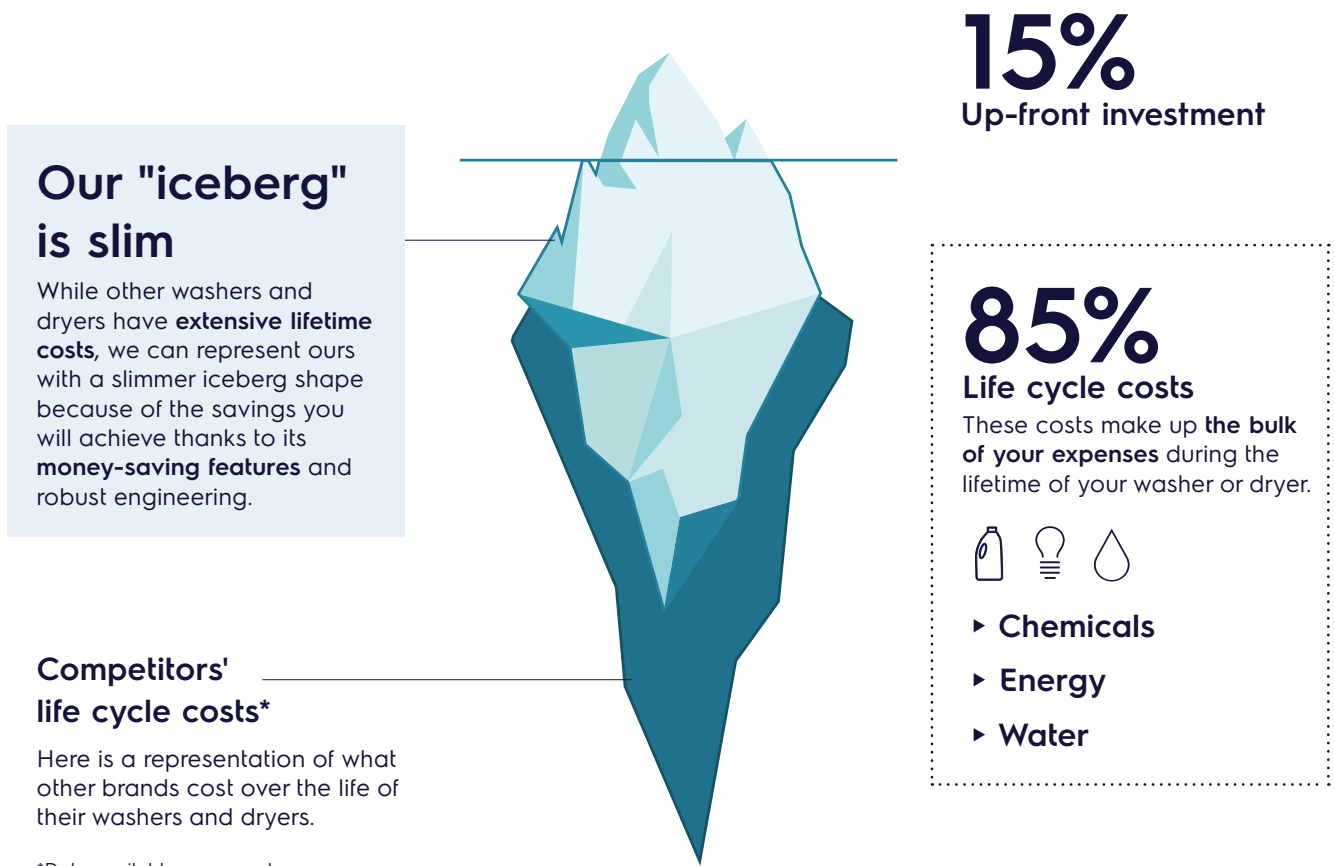
## Long-term savings



You know how expensive it can be to run a laundry business. Let us **keep your costs down** so your business can reach new heights.

# Look under the surface to see how much you save

When considering the cost of an investment, the up-front expense is just the tip of the iceberg. Operating costs accumulate, year after year, and make up the largest share of your expense. Over the long term, **our washers and dryers will cost you much less and make your investment more profitable.**



## From intelligence to Excellence

By considering our customers' needs, ideas and suggestions, we create smart solutions that make our customers' work lives easier and more profitable.

# Not just clean: green and lean

Line 6000 is designed for the lowest possible **water, energy and detergent** consumption. With Automatic Savings or Integrated Savings, Intelligent Dosing and Power Balance technologies, we ensure minimum cost per load while helping you run an environmentally sustainable business.



## Not a drop of water wasted

**Automatic Savings** weighs the linens and adjusts the water intake to the actual load. This **saves water, energy and money** at anything less than full loads.



without AS



with AS



## Avoid overloading and underloading

With **Integrated Savings** measuring and showing the load in real time, you can avoid overloading and underloading, for optimized productivity. This way you **maximize profits, obtain optimal results, save water and energy** at less than full loads, and extend the lifetime of your washer.



Longer lifecycle

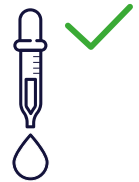


## Precise detergent dosing

With the **Intelligent Dosing** feature, the precise amount of detergent will be added automatically according to the weight of the load.



without ID



with ID



## Extraction sequence perfectly balanced

**Power Balance** translates to real-time unbalance monitoring and G factor adjustment throughout the extraction sequence, for **maximum dewatering** and lowest moisture retention to save you time and money in the drying process.



Maximum dewatering



## Two easy options for automatic dosing

The Intelligent Dosing feature that automatically adds the right amount of chemicals works in perfect tandem with either of our dosing pump options. **JETSAVE and DOSAVE optimize the process** to eliminate waste and deliver consistently excellent results.

Sound complicated? Not at all. Your washer is ready to go with **two quick connection cables**: one for the power supply and one for dosing signals data, with no need for multiple cables or difficult wiring jobs.



**JETSAVE** option



**DOSAVE** option

The **JETSAVE option** uses venturi-based, water-powered pumps that require less maintenance because there are no moving parts or squeeze tubes to replace. Dosage is reliable and installation is sleek and tidy thanks to the built-in flush manifold.



# We make breakthroughs to save you money

Line 6000 is several laps ahead of other dryers in terms of energy savings and speed. This is good for the world around us and good for your bottom line. By investing heavily in **advanced technology**, we have achieved **outstanding drying times** while also reducing the dryer's life cycle costs.

## Heat Pump Dryers: where sustainability meets performance

Heat Pump Dryers have always been good at saving energy. Ours takes it a step further and **saves you more than 60% compared to traditional dryers!**

In the past, the tradeoff for energy savings through heat pump technology was slower drying times. Electrolux Professional has **changed the rules when it comes to Heat Pump Dryers and performance.**

Save more than  
**60%**  
on energy





### Best result with all fabrics

From delicate silk to heavy cotton: manually **adjusts the drum speed to control the mechanical action**. Garments will move correctly in the drum for the fastest drying.

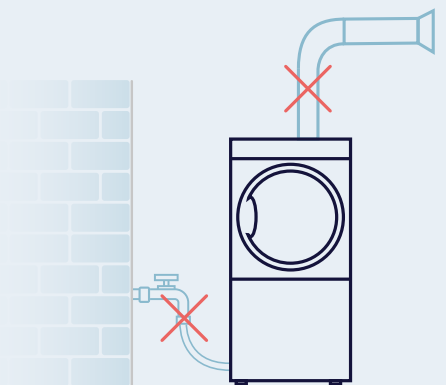
## Efficient in every way

The Heat Pump line is suitable for installation almost anywhere thanks to a small footprint and **plug & play capabilities**. This saves money on installation costs because there is no need for exhaust or a water cooling system.

### No need for:

- exhaust
- water cooling system

### Install it anywhere and save money!



# More exciting news in dryer technology



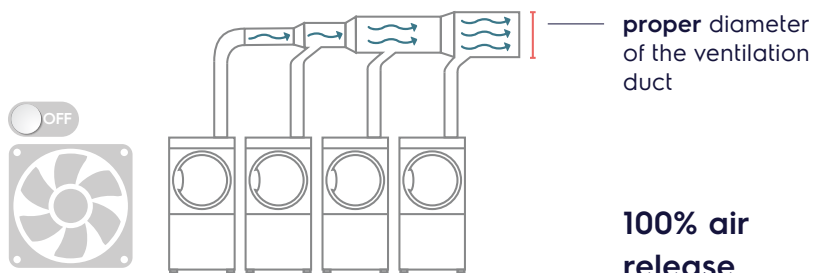
## High performance, less noise

The **Adaptive Fan control\*** adjusts the fan speed automatically to save energy, reduce drying time, and provide an even drying result. It can also be used to reduce the noise level when needed, and makes it easier to install dryers in a challenging environment. Adaptive Fan turns on automatically, for example if filters are clogged or if ventilation ducts are too small. It also makes the fan last longer, to save you time and money.

\*The Adaptive Fan control is only available with the electric version.

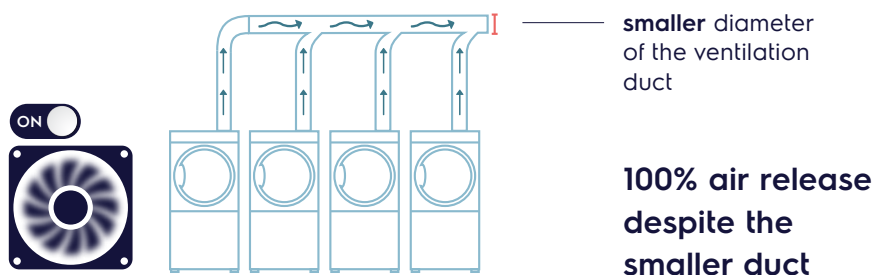
## Adaptive Fan control can also be important when you have more than one dryer in a series:

If your ventilation duct grows wider and the filters are clean



If your ventilation duct has a constant diameter:

Adaptive Fan will compensate by adjusting the fan speed of each dryer, to keep air flowing efficiently.







## For all of our dryers



### Dry not overdry

**Moisture Balance** measures the exact moisture level throughout the drying process. Protects garments and saves energy by stopping as soon as they are dry, or at the moisture level you set.



Watch  
the video  
and find out  
more!





## Outstanding productivity

The laundry business is hugely time-intensive. Faster equipment means you can handle more loads of laundry in a day: **the easiest way to make your business more productive.**

# Wash & dry more. In less time

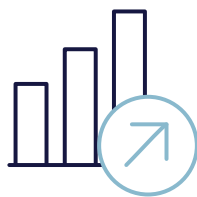
Achieving success lies in meeting customers' expectations and grounding them in reality by delivering **products that satisfy business needs.**

With Line 6000, there is no such thing as compromise, and you can finally **have it all.**

**Maximum productivity  
and consistently ideal  
results, time after time.  
Turn the page  
to find out more.**



**Satisfied  
customers**

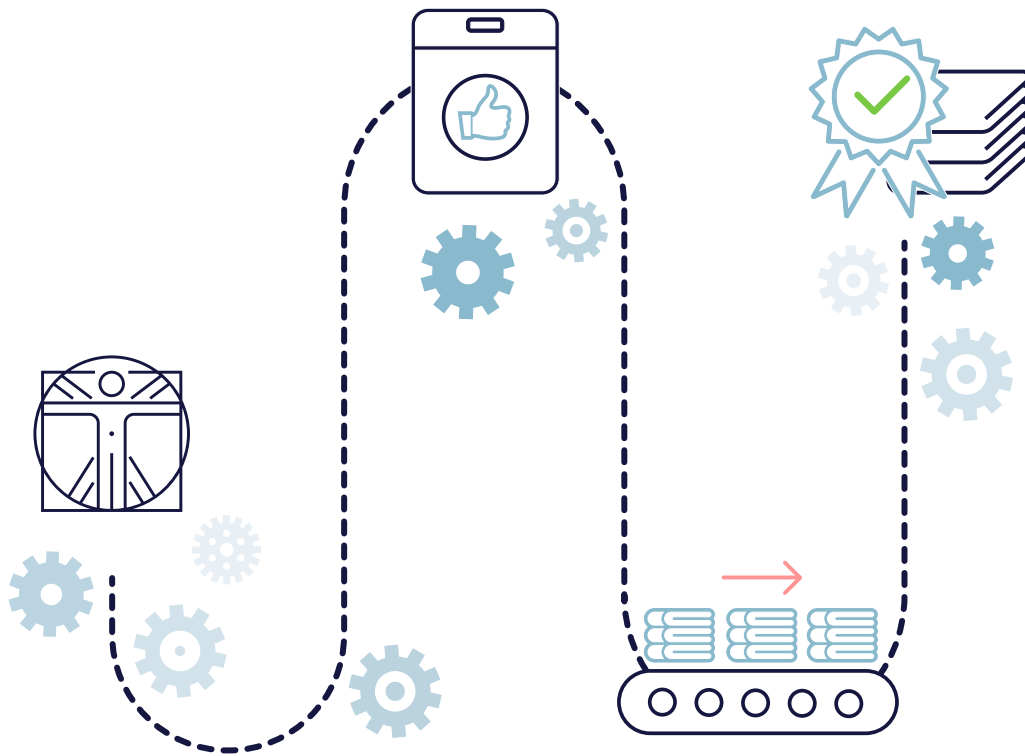


**Greater  
profits**



# Washers designed so thoughtfully that every step is easy

Imagine never having to wonder what buttons to press to select a program or add the right amount of chemicals. Load after load, you'll save time on these tasks, and enjoy a **stress-free experience** thanks to our ergonomic improvements. Extreme user friendliness and reduced strain add up to a **more productive business** all around: just press a button for **consistently excellent results**.



## Exceptional design

Ergonomic improvements and an intuitive interface



## Easy to use

Less strain, obvious choices



## Effortless process

Get it right the first time!



## Do more & better in less time

The goal of every successful business

# The most productive dryer you can buy

There is no other dryer that can **handle the volumes** ours does in the same amount of time. You will be amazed by how fast you can move loads of laundry and how much your business can accomplish.



**16** KG in **42** MIN\*

**Shortest drying time on the market**

That's a performance like no other in the industry!

\*At rated capacity, 100% cotton load at 50% initial moisture dried to 0%.



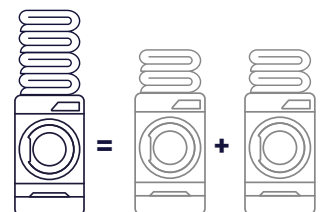
## Dry more garments in less time

The smaller dryer takes 42 minutes\* to dry 6 kg of garments. Choose the larger model and you will be even more productive!

\*At rated capacity, 100% cotton load at 50% initial moisture dried to 0%.

## Did you know?

To dry this load in the same amount of time, **with other brands you would need two dryers instead of one!**





Real-time  
solutions

Elect  
PROFES  
O

A world of digital solutions that **simplify your work and help your business develop.** Benefit from a growing range of services, designed just for you.

# The OnE effect

A unique partner. A world of benefits.

Electrolux Professional **OnE** is your digital partner that helps you to optimize your laundry operation. **OnE** guides you through your day enabling you to make the right decision every time. Whether you are an owner, manager, operator, or technician, **OnE** helps you to get top performance from your Electrolux Professional solutions. This will maximize your revenue and accelerate your return on investment.

Electrolux  
PROFESSIONAL  
**OnE**



## Improve your work-life

Electrolux Professional **OnE** gives you remote control over your operations. This saves you time to focus on the essentials of your business.



## Maximize profit

Electrolux Professional **OnE** helps you reduce consumption to a minimum and optimize the efficiency of your business. This in turn will maximize your profits.



## Boost your performance

Electrolux Professional **OnE** gives you the insight to better organize your production flow, and so improve your productivity and output quality and meet the highest quality standards.



## Increase uptime of your equipment

Electrolux Professional **OnE** helps you plan maintenance at just the right time, to ensure maximum uptime while reducing your costs for unexpected breakdowns.

# The OnE result

## Success stories

Everyday experiences that, thanks to Electrolux Professional **OnE**, turn into incredible benefits.

**OnE**



**Name:** Mark  
**Role:** Hotel owner  
**Task:** Workflow optimization



Using **OnE**, Mark realizes that the workflow of his laundry is not optimized



Mark introduces new work methods and productivity improves



Now Mark starts selling his services to other hotels, creating additional revenue



**+35% productivity**  
**+15% income**



**OnE**



**Name:** Silvia  
**Role:** Coin-op owner  
**Task:** Revenue management



The use patterns of the machines show slow hours during mid day



She starts a "special price campaign" for those specific hours



Silvia manages to attract new customers and increases her revenue



Electrolux Professional **OnE** simplifies and remotely manages many aspects of your job, with the objective of achieving a better working life and **increasing your income and freedom.**

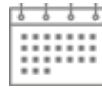
**OnE**



**Name:** Benny  
**Role:** Nursing home operator  
**Task:** Performance management



Benny receives several notifications from the **OnE** app about how to improve efficiency



Benny reduces operating hours by 3 per day and saves money thanks to the improved workflow



Productivity is up and costs are down. The laundry is managed much better



**OnE**



**Name:** Tom  
**Role:** Laundry site manager  
**Task:** Service management



Tom receives a notification that maintenance is due in 30 days



Service Partner receives the same notification and maintenance service is confirmed



Increased productivity due to planned service – no unplanned stops. Increased income and ROI, improved customer service

↓  
**+15% income**



# Essentia Teamed to serve you. Anytime, anywhere

Essentia is **the heart of superior Customer Care**, a dedicated service that ensures your competitive advantage. Provides you with the support you need and takes care of your processes with a **reliable service network**, a range of tailor-made exclusive services and innovative technology.

You can count on more than **2,200 authorized service partners**, **10,000 service engineers** in more than **149 countries**, and over **170,000 managed spare parts**.

## Service network, always available

We stand ready and committed to support you with a **unique service network** that makes **your work-life easier**.

## Keep your equipment performing

Undertaking correct maintenance in **accordance with Electrolux Professional Manuals** and recommendations is essential to avoid unexpected issues. **Electrolux Professional Customer Care** offers a number of **tailor-made service packages**. For more information contact your preferred **Electrolux Professional Authorized Service Partner**.

## Service agreements you can trust

You can choose from **flexible tailor-made service packages**, according to your business needs, offering a variety of maintenance and support services.



Watch  
the video  
and find out  
more!



# Accessories & Consumables: your added value

Simplify your work and help your equipment last longer with **original Accessories & Consumables**. Dispatched quickly after rigorous testing by Electrolux Professional experts to ensure **best-in-class performance, profitability and user safety**.

## Keep your laundry moving!

A wide range of accessories allows efficiency and best ergonomics

- ▶ The right trolleys and racks **facilitate the handling** of the laundry and help to prevent repetitive strain injuries.
- ▶ **Ergonomic laundry trolleys and racks** are suitable for commercial laundries, hospitals, nursing homes, hotels, spas, etc. Their design ensures that the trolley will come close to the equipment so that the laundry does not end up on the floor.
- ▶ Carts can be used for **the storage and in-house transport** of lightweight items such as shirts and other garments, terry cloth, bed linen and blankets.



Code	Description
0W1XFY	Canvas Trolley RV-74 - 200 lt
0W1Y2F	Stainless Steel Trolley BV-220 / BV-131lt
0W1Y2C	Bulk Transport Cart HV-52

Part number
0W1XFY 432730556
0W1Y2F 432730562
0W1Y2C 432730558



Watch the video and find out more!



# lagoon® Advanced Care fast, easy and green

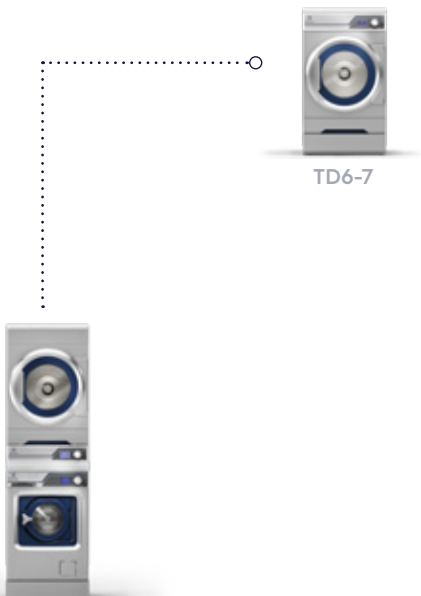
lagoon® Advanced Care in its Line 6000 version blends all the innovations of the new range, with the utmost **attention to textile cleaning quality and performance**, typical of the Electrolux Professional wet cleaning tradition. **New functionalities** will make your garments cleaning operation more profitable and easier to perform. The Woolmark Company endorsement certifies that your customers' garments will enjoy the best available service in the market.



Extreme **flexibility**, highest load factor per cycle, **lowest detergent consumption**, unmatched expertise in handling delicate textiles and garments.

# Range overview

## Line 6000 Stackable Washer / Dryer



TD6-7



WH6-6

	Electric	Gas	Heat Pump
Drum volume (l)	135	135	135
Dry weight capacity (kg/lb)	7/15	7/15	7/15
Width (mm-in)	600	600	600
Depth (mm-in)	845	845	845
Height (mm-in)	1050	1050	1050
Heat pump module	-	-	●
Horizontal filter	●	●	●
Drum Speed control	-	-	-
Adaptive Fan control	-	-	-
Moisture Balance	○	○	●
Stainless steel drum / front / door / side plates	○	○	○
Galvanized steel drum / front / door / side plates	●	●	●
Compass Pro extended	●	●	●
Reversing drum	●	●	●
lagoon® Advanced Care	○	○	○

Drum volume (l)	53
Dry weight capacity (kg/lb)	6/13
G-factor	530
Width (mm-in)	595 - 23 7/16"
Depth (mm-in)	681 - 26 13/16"
Height (mm-in)	832 - 32 3/4"
Electric / steam / non-heated	● - ●
Number of detergent pumps	5
Frontal detergent dispenser	●
ClarusVibe	-
Automatic Savings	●
Intelligent Dosing	-
Power Balance	●
Integrated Savings	-
lagoon® Advanced Care	○

# Line 6000 Washers



WH6-7



WH6-8



WH6-11

Drum volume (l)	65	75	105
Dry weight capacity (kg/lb)	7/15	8/18	11/25
G-factor	450	450	450
Width (mm-in)	720 - 28 3/8"	720 - 28 3/8"	830 - 32 11/16"
Depth (mm-in)	721 - 28 3/8"	721 - 28 3/8"	757 - 29 13/16"
Height (mm-in)	1132 - 44 9/16"	1132 - 44 9/16"	1212 - 47 11/16"
Electric / steam / non-heated	●	●	●
Number of detergent pumps	15	15	15
Front loaded detergent box	-	-	-
ClarusVibe	●	●	●
Automatic Savings	●	●	●
Intelligent Dosing	●	●	●
Power Balance	●	●	●
Integrated Savings	○	○	○
lagoon® Advanced Care	-	-	-



WH6-14



WH6-20



WH6-27



WH6-33

Drum volume (l)	130	180	240	300
Dry weight capacity (kg/lb)	14/30	20/45	27/60	33/75
G-factor	450	450	450	450
Width (mm-in)	910 - 35 13/16"	970 - 38 3/16"	1020 - 40 3/16"	1020 - 40 3/16"
Depth (mm-in)	821 - 32 5/16"	947 - 37 5/16"	990 - 39"	1134 - 44 5/8"
Height (mm-in)	1340 - 52 3/4"	1426 - 56 1/8"	1462 - 57 9/16"	1462 - 57 9/16"
Electric / steam / non-heated	●	●	●	●
Number of detergent pumps	15	15	15	15
Front loaded detergent box	○	○	○	○
ClarusVibe	●	●	●	●
Automatic Savings	●	●	●	●
Intelligent Dosing	●	●	●	●
Power Balance	●	●	●	●
Integrated Savings	○	○	○	○
lagoon® Advanced Care	-	○	○	○

● STANDARD ○ OPTIONAL – NOT AVAILABLE

# Line 6000 Dryers



TD6-6  
Electric      Condense

	Electric	Condense
Drum volume (l)	130	130
Dry weight capacity (kg/lb)	6/13	6/13
Width (mm-in)	597	597
Depth (mm-in)	725	725
Height (mm-in)	839	839
Heat pump module	-	-
Horizontal filter	-	-
Drum Speed control	-	-
Adaptive Fan control	-	-
Moisture Balance	●*	●*
Stainless steel drum / front / door / side plates	●	●
Galvanized steel drum / front / door / side plates	-	-
Compass Pro extended	●**	●**
Reversing drum	●	●
lagoon® Advanced Care	-	-

\* Residual Moisture Control

\*\* Compass Pro standard



TD6-7  
Electric      Gas      Heat Pump

	Electric	Gas	Heat Pump
Drum volume (l)	135	135	135
Dry weight capacity (kg/lb)	7/15	7/15	7/15
Width (mm-in)	600	600	600
Depth (mm-in)	845	845	845
Height (mm-in)	1050	1050	1050
Heat pump module	-	-	●
Horizontal filter	●	●	●
Drum Speed control	-	-	-
Adaptive Fan control	-	-	-
Moisture Balance	○	○	●
Stainless steel drum / front / door / side plates	○	○	○
Galvanized steel drum / front / door / side plates	●	●	●
Compass Pro extended	●	●	●
Reversing drum	●	●	●
lagoon® Advanced Care	○	○	○



TD6-14  
Electric      Gas      Heat Pump      Steam

	Electric	Gas	Heat Pump	Steam
Drum volume (l)	255	255	255	255
Dry weight capacity (kg/lb)	14/30	14/30	14/30	14/30
Width (mm-in)	793	793	793	793
Depth (mm-in)	965	965	965	965
Height (mm-in)	1771	1771	1771	1771
Heat pump module	-	-	●	-
Horizontal filter	●	●	●	●
Drum Speed control	○	○	○	○
Adaptive Fan control	○	-	-	-
Moisture Balance	○	○	●	○
Stainless steel drum / front / door / side plates	○	○	○	○
Galvanized steel drum / front / door / side plates	●	●	●	●
Compass Pro extended	●	●	●	●
Reversing drum	●	●	●	●
lagoon® Advanced Care	○	○	○	○



TD6-20  
Electric      Gas      Heat Pump      Steam

	Electric	Gas	Heat Pump	Steam
Drum volume (l)	360	360	360	360
Dry weight capacity (kg/lb)	20/44	20/44	20/44	20/44
Width (mm-in)	793	793	793	793
Depth (mm-in)	1202	1202	1202	1202
Height (mm-in)	1771	1771	1771	1771
Heat pump module	-	-	●	-
Horizontal filter	●	●	●	●
Drum Speed control	○	○	○	○
Adaptive Fan control	○	-	-	-
Moisture Balance	○	○	●	○
Stainless steel drum / front / door / side plates	○	○	○	○
Galvanized steel drum / front / door / side plates	●	●	●	●
Compass Pro extended	●	●	●	●
Reversing drum	●	●	●	●
lagoon® Advanced Care	○	○	○	○



Excellence is central to everything we do. By anticipating our customers' needs, we strive for Excellence with our people, innovations, solutions and services. To be the OnE making our customers' work-life easier, more profitable – and truly sustainable every day.

Follow us on



[professional.electrolux.com](http://professional.electrolux.com)

Scan the cover to see Line 6000 in **augmented reality**



## Excellence with the environment in mind

- ▶ All our factories are ISO 14001-certified
- ▶ All our solutions are designed for low consumption of water, energy, detergents and harmful emissions
- ▶ In recent years over 70% of our product features have been updated with the environmental needs of our customers in mind
- ▶ Our technology is RoHS and REACH compliant and over 95% recyclable
- ▶ Our products are 100% quality tested by experts

